

KEY TO ELECTRICAL SYMBOLS

	LST (LOW SURFACE TEMPERATURE) RADIATOR
	CEILING LIGHT
	CEILING LIGHT
	HALL LIGHT
	HALL LIGHT WITH INTEGRAL EMERGENCY LIGHTING
	CEILING LIGHT BULB HOLDER
	LOW ENERGY LIGHT FITTING
	WALL LIGHT
	SINGLE LIGHT SWITCH
	2-WAY LIGHT SWITCH
	MULTIGANG SWITCH (No. SHOWN)
	SINGLE SWITCHED SOCKET (WITH NEON INDICATOR)
	TWIN SWITCHED SOCKET (WITH NEON INDICATOR)
	SHAVER SOCKET
	POWER SWITCH WITH NEON INDICATOR
	UNSWITCHED SOCKET
	COOKER SWITCH (WITH NEON INDICATOR)
	COOKER CABLE OUTLET
	BT TELEPHONE SOCKET
	SECONDARY TELEPHONE SOCKET
	DOUBLE GANG SAT/TV/RADIO SOCKET
	TV SOCKET
	FUSE BOARD WITH CIRCUIT BREAKER
	FIRE DOOR CLOSER CONNECTION POINT
	BELL PUSH
	DOOR BELL
	EMERGENCY PULL-CORD
	EMERGENCY WALL MOUNTED LIGHT
	WARDEN CALL UNIT WITH SPEAKER AND PULL CORD
	EMERGENCY LIGHTING KEY SWITCH
	SMOKE DETECTOR
	HEAT DETECTOR
	CARBON MONOXIDE DETECTOR WITH SOUNDER ALARM
	SMOKE DETECTOR WITH SOUNDER ALARM
	EXTRACTOR FAN
	FAN ISOLATOR SWITCH

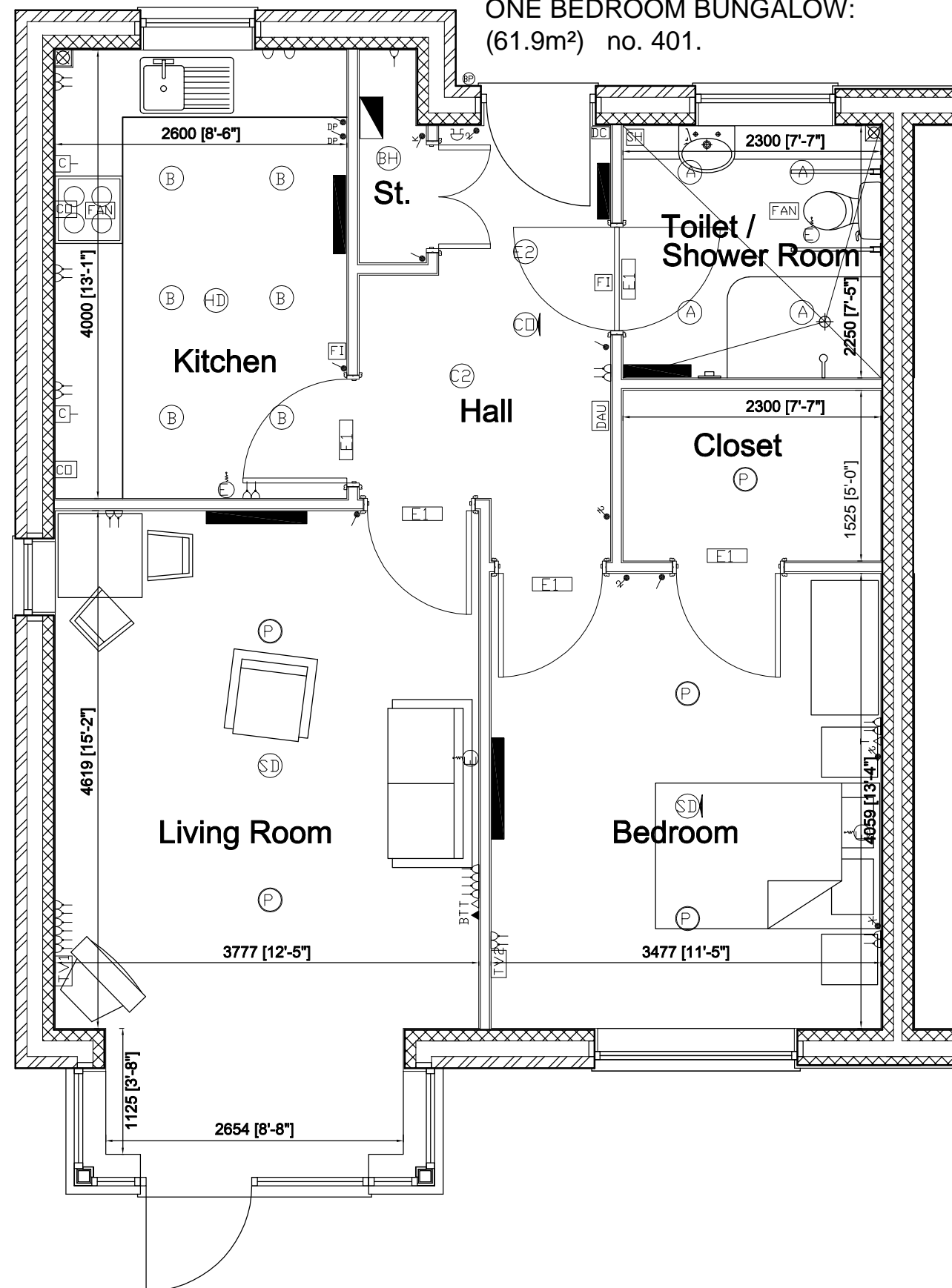
KEY TO DIMENSIONS

Metric Dimension (Millimeters)	Imperial Dimension (Feet and Inches)
2300	7'-7"

ALL DIMENSIONS ARE SUBJECT TO CONSTRUCTION TOLERANCES

A Typical One Bed Bungalow

ONE BEDROOM BUNGALOW:
(61.9m²) no. 401.



The particulars are set out as a general outline for guidance only.

The information in this leaflet does not in any way form part of a contract or warranty.