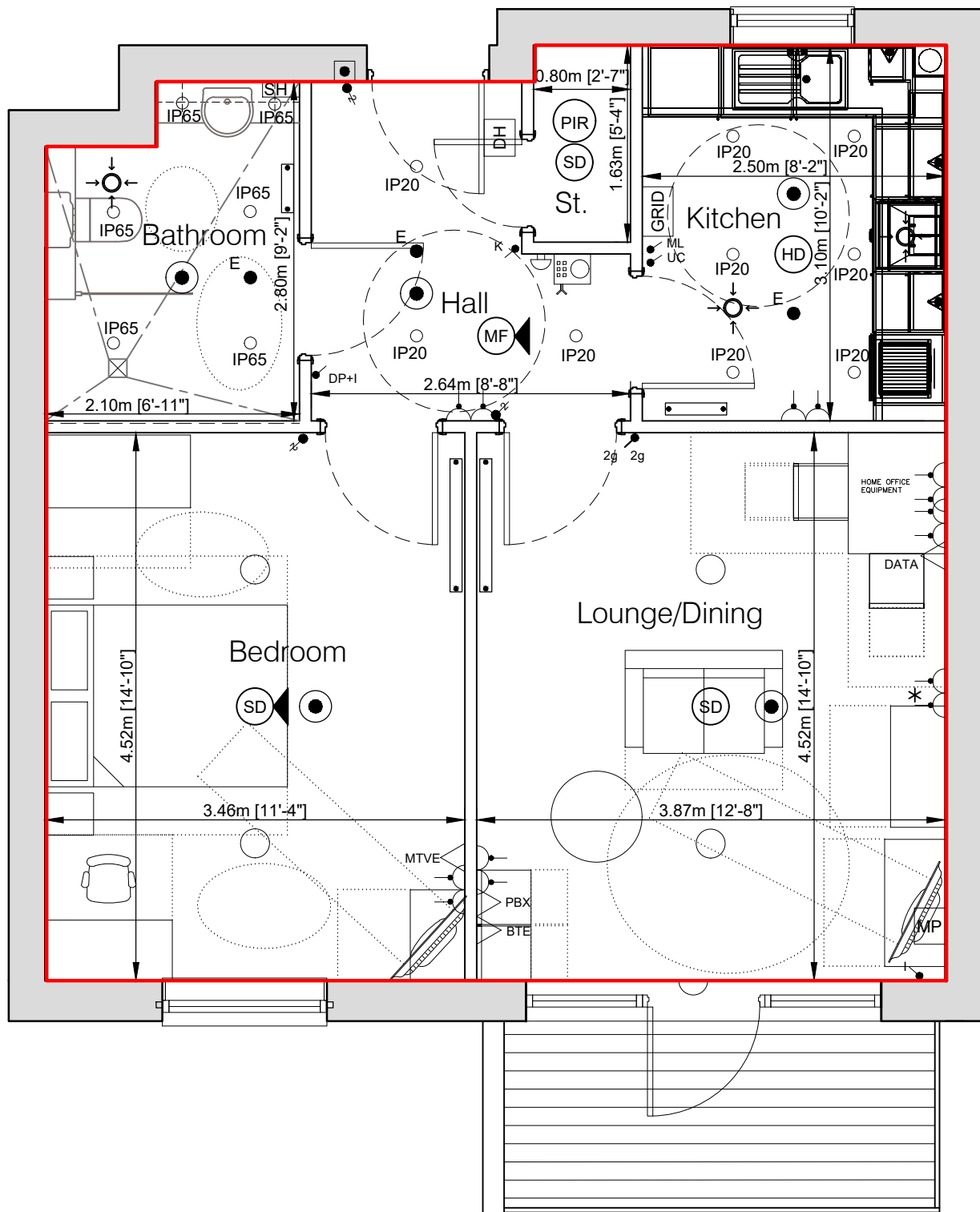


SCALE 1 : 50  
SCALE 1 : 1



- LEGEND**
- 1 WAY LIGHT SWITCH (DP=DOUBLE POLE) (WIDE ROCKER TYPE)
  - 2 WAY LIGHT SWITCH (WIDE ROCKER TYPE)
  - KEY SWITCH TO BE 2WAY TYPE & HAVE NEON INDICATOR TO IDENTIFY WHEN 'ON TEST'
  - INTERMEDIATE SWITCH
  - 'N' DENOTES NEON INDICATOR
  - 'I' DENOTES LED INDICATOR
  - 2 GANG LIGHT SWITCH
  - 3 GANG LIGHT SWITCH
  - 'D' DENOTES DIMMER
  - UNDER CUPBOARD LIGHTING
  - MAIN LIGHT SWITCH
  - BED HEAD LIGHT SWITCH
  - PBX △ TELEPHONE OUTLET
  - BTE △ BT EXTENSION TELEPHONE OUTLET WIRED TO BT MASTER OUTLET
  - MTV △ MATV SYSTEM - MASTER
  - MTVE △ MATV - TV OUTLET EXTENSION
  - DATA △ RJ45 OUTLET
  - HEAT DETECTOR
  - OPTICAL SMOKE DETECTOR
  - OPTICAL SMOKE DETECTOR (SOUNDER BASE)
  - MULTIFUNCTION DETECTOR (SOUNDER BASE)
  - NON-MAINTAINED EMERGENCY LUMINAIRE
  - 10W LED CEILING MOUNTED LIGHT C/W WITH PIR
  - CEILING ROSE WITH LOW ENERGY LIGHT CRABTREE 5855/S AND MEGAMAN 143322 LAMP
  - LOW ENERGY EXTERNAL BULKHEAD - ASD CLARITY LANDSCAPE IP65 EYELID, BLACK FINISH
  - IP65 RECESSED GU10 DOWNLIGHT IP65 RATED C/W 7W 500 LUMEN G10 LAMP MINIMUM 30,000 HOURS LAMP LIFE, COLOUR 840, BRUSHED CHROME BEZEL.
  - IP20 RECESSED GU10 DOWNLIGHT IP20 RATED C/W 7W 500 LUMEN G10 LAMP MINIMUM 30,000 HOURS LAMP LIFE, COLOUR 840, BRUSHED CHROME BEZEL.
  - TWIN SWITCHED SOCKET (NEON INDICATOR) WITH OUTBOARD ROCKERS
  - \* ○ USB SOCKET (47mm BACKBOX)
  - SWITCHED FUSED CONNECTION UNIT C/W NEON INDICATOR
  - DB DENOTES DOORBELL
  - F DENOTES FAN UNIT
  - FIRE DOOR CLOSER CONNECTION POINT (these are wired from external fire alarm system)
  - WALL MOUNTED REACH PLUS UNIT C/W PULL CORD & HUSH BUTTON (120x187mm)
  - CONSUMER UNIT
  - GRID 4 GANG GRID SWITCH c/w FOLLOWING SWITCHES:
    - WASHING MACHINE/DRYER
    - FRIDGE FREEZER
    - DISHWASHER (ENHANCED ONLY)
    - EXTRACT HOOD
  - DOOR BELL SOUNDER (200X120mm)
  - DOOR BELL PUSH @ 1000AFFL
  - SH SHAVER SOCKET
  - MP MEDIA PLATE (CRABTREE 4318 WHITE OR CHROME) CONTAINING FOLLOWING:
    - 2-TWIN 13A SOCKETS
    - 1-RJ45 OUTLET FOR BT
    - 1-RJ45 OUTLET FOR SMART TV
    - 4-1 EACH SAT1, SAT2, TV, FMDAB OUTLETS
    - 1-SATELLITE RETURN
    - 1-BLANK FOR FUTURE SKY QUAD OUTLET
 \* WHERE BTE AND PBX OUTLETS ARE INSTALLED TOGETHER, THEY SHALL BE MOUNTED AS A TWIN OUTLET PLATE FIXED ONTO A SINGLE SOCKET BOX.
  - MAIN WATER BOND
  - EXTRACT AIR VALVE
  - RADIATOR
  - SPRINKLER HEAD
  - SPRINKLER HEAD

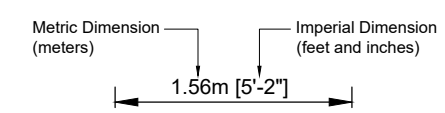
Copyright of this drawing is vested in the Architect and it must not be copied or reproduced without consent. Every effort has been made to ensure these details are correct but this does not constitute a legal document.

DO NOT SCALE OFF THIS DRAWING. IF IN DOUBT ASK.

THE INFORMATION IN THIS LEAFLET DOES NOT IN ANY WAY FORM PART OF A CONTRACT OR WARRANTY.

THE PARTICULARS ARE SENT OUT AS A GENERAL OUTLINE FOR GUIDANCE ONLY.

**KEY TO DIMENSIONS**



Dimensions subject to construction tolerances and are for guidance only.

Scale. 1:50 @ A3 Date. May-19 Drawn. AL

Client. The ExtraCare Charitable Trust  
Marketing Drawings

Job title. ExtraCare Retirement Village  
Haslucks Green Road, Shirley  
B6675-Sales-Type A Level 6

Sixth Floor  
Apartment Type A (Enhanced)  
Unit 630 Area = 55.66m<sup>2</sup>

# Apartment 630 Type A

