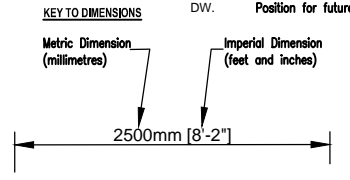


LEGEND

- 1 WAY LIGHT SWITCH (DP=DOUBLE POLE)
- 2 WAY LIGHT SWITCH (WIDE ROCKER TYPE)
- FAN ISOLATING SWITCH
- EMERGENCY LIGHTING KEY SWITCH
- INTERMEDIATE SWITCH
- TELEPHONE OUTLET
- BT MASTER TELEPHONE OUTLET
- BT EXTENSION TELEPHONE OUTLET WIRED TO BT MASTER OUTLET.
- MAYV SYSTEM - MASTER
- MAYV - TV OUTLET EXTENSION
- SATV SYSTEM - MASTER
- HEAT DETECTOR
- OPTICAL SMOKE DETECTOR
- OPTICAL SMOKE DETECTOR (SOUNDER BASE)
- CARBON MONOXIDE DETECTOR (SOUNDER BASE)
- EMERGENCY PULL CORD
- UNDER CUPBOARD LIGHT
- DOOR BELL SOUNDER
- DOOR BELL PUSH
- EXTRACTOR FAN
- ENERGY SAVING CEILING MOUNTED LIGHT
- CEILING ROSE WITH LOW ENERGY LIGHT
- CIRCULAR LIGHT
- LED NON MAINTAINED EMERGENCY LIGHT. FIRE RATED AND WITH INSULATION SUPPORT BOX ON TOP FLOOR APARTMENTS.
- WALL LIGHT AS FRANKLITE WB243EL/8SS
- TWIN SWITCHED SOCKET (NEON INDICATOR)
- SWITCHED SOCKET (NEON INDICATOR)
- FIRE DOOR CLOSER CONNECTION POINT (these are wired from external fire alarm system)
- TV MASTER UNIT
- DISPERSED ALARM UNIT WITH PULL CORD
- SHAVER POINT
- CONSUMER UNIT (low level) - 1200mm
- RADIATOR
- GRID
3 GANG GRID SWITCH c/w FOLLOWING SWITCHES
• WASHING MACHINE/DRYER
• FRIDGE FREEZER
• DISHWASHER
- NOTE: ENHANCED FLATS HAVE A 4 GANG SWITCH WHICH INCLUDES A SWITCH FOR THE COOKER HOOD
- SWITCHED FCU
- IP44 ENERGY SAVING 18W TC-TEL LAMP, HF, RECESSED DOWNLIGHTER WITH WHITE BEZEL IP44, CLEAR GLASS ATTACHMENT, 125 # MM MAX, COMPLETE, FIRE RATED LUMINAIRES SHALL BE FITTED THROUGH FIRE RATED CEILINGS, AS AURORA LPP650+LPP683. ALL TOP FLOOR APARTMENT RECESSED LUMINAIRES SHALL BE ENCLOSED WITHIN AN INSULATION SUPPORT BOX TO ENSURE FREE AIR SURROUNDS THE LUMINAIRE.
- W IP44 W DENOTES FROSTED GLASS ATTACHMENT
- IP44 ENERGY SAVING 18W TC-TEL LAMP, HF, RECESSED DOWNLIGHTER WITH WHITE BEZEL IP44, CLEAR GLASS ATTACHMENT, 125 # MM MAX, COMPLETE, FIRE RATED LUMINAIRES SHALL BE FITTED THROUGH FIRE RATED CEILINGS, AS AURORA LPP650+LPP683. ALL TOP FLOOR APARTMENT RECESSED LUMINAIRES SHALL BE ENCLOSED WITHIN AN INSULATION SUPPORT BOX TO ENSURE FREE AIR SURROUNDS THE LUMINAIRE.
- MP MEDIA PLATE CONTAINING FOLLOWING:
3-TWIN 13A SOCKETS
1-BT OUTLET
1-PBX OUTLET AND ALL OUTLETS TO RECEIVE DTV, FM, DAB, SKY+, FREESAT & SKY RETURN
- * WHERE BTE AND PBX OUTLETS ARE INSTALLED TOGETHER, THEY SHALL BE MOUNTED AS A TWIN OUTLET PLATE FIXED ONTO A SINGLE SOCKET BOX.
- FF. Position for Integrated Fridge/Freezer.
- OH. Position for Integrated Oven Housing
- W.M.D. Position for Integrated Washing Machine/Dryer
- DW. Position for future Dishwasher



COPYRIGHT OF THIS DRAWING IS VESTED IN THE ARCHITECT AND IT MUST NOT BE COPIED OR REPRODUCED WITHOUT CONSENT. EVERY EFFORT HAS BEEN MADE TO ENSURE THESE DETAILS ARE CORRECT BUT THIS DOES NOT CONSTITUTE A LEGAL DOCUMENT.

DO NOT SCALE OFF THIS DRAWING IF IN DOUBT ASK

THE INFORMATION IN THIS LEAFLET DOES NOT IN ANY WAY FORM PART OF A CONTRACT OR WARRANTY

THE PARTICULARS ARE SENT OUT AS A GENERAL OUTLINE FOR GUIDANCE ONLY.

Scale. 1:50 @ A3 Date. Dec' 2015 Drawn.
Client. The ExtraCare Charitable Trust
Marketing Drawings
Job title. Lickey Road ExtraCare Retirement Village
Longbridge.

Drawing No. B5922 - Lickey Road - Apartment... 251
Second Floor... Block C
Apartment Type A (Enhanced)
Unit 251 Area = 55.76m²

Apartment 251 Type A - 1 Bedroom

