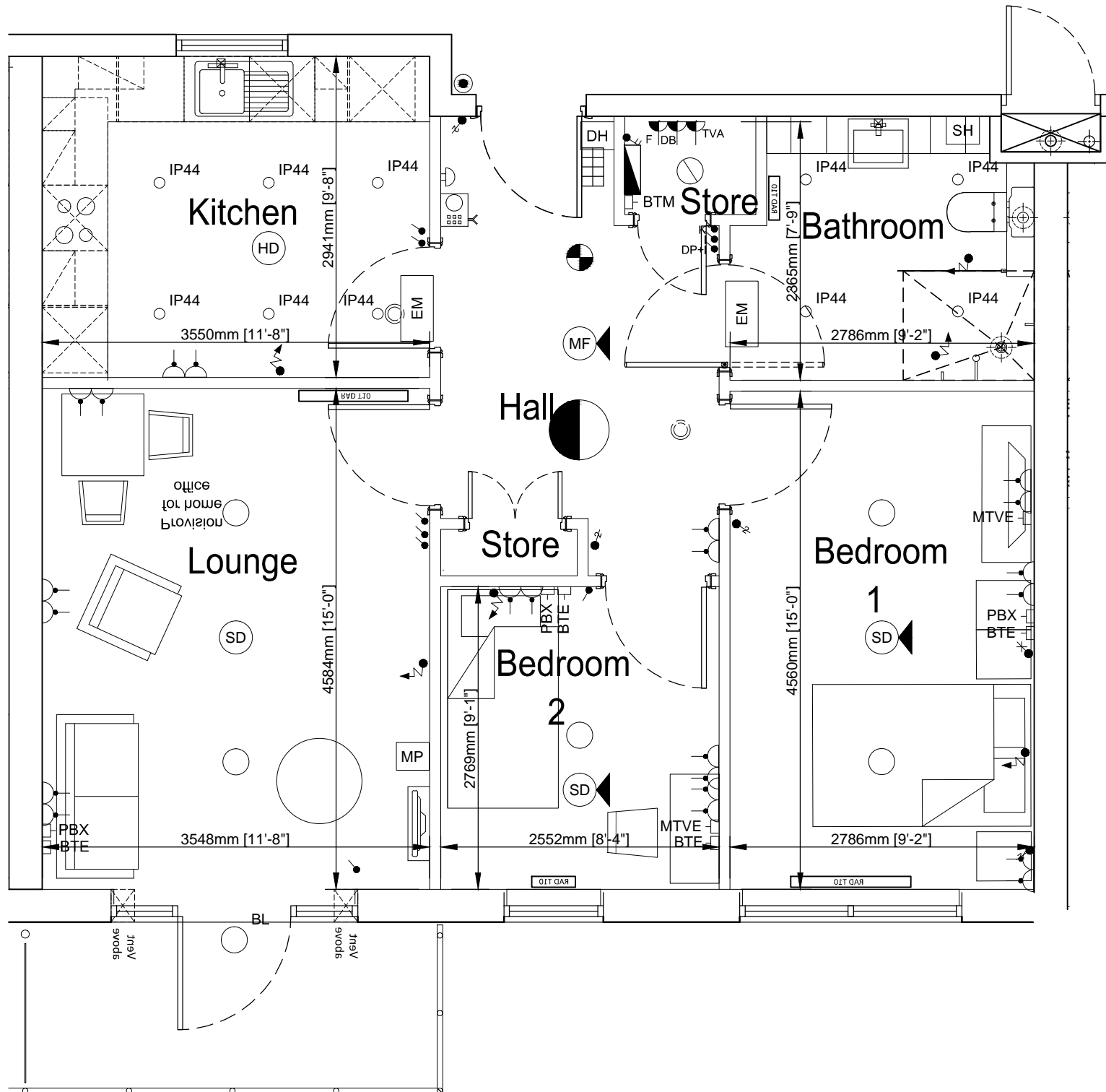


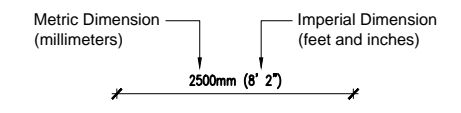
SCALE 1 : 50
SCALE 1 : 1



LEGEND

- 1 WAY LIGHT SWITCH (DP=DOUBLE POLE) (WIDE ROCKER TYPE)
 - 2 WAY LIGHT SWITCH (WIDE ROCKER TYPE)
 - MVHR ISOLATING SWITCH
 - EMERGENCY LIGHTING KEY SWITCH TO TEST ALL EMERGENCY LIGHTS
 - INTERMEDIATE SWITCH
 - 'I' DENOTES LED INDICATOR
 - PBX TELEPHONE OUTLET
 - BTM BT MASTER TELEPHONE OUTLET
 - BTE BT EXTENSION TELEPHONE OUTLET WIRED TO BT MASTER OUTLET.
 - MTV MATV SYSTEM - MASTER
 - MTVE MATV - TV OUTLET EXTENSION
 - DATA RJ45 OUTLET
 - HD HEAT DETECTOR
 - SD OPTICAL SMOKE DETECTOR
 - SD OPTICAL SMOKE DETECTOR (SOUNDER BASE)
 - MF MULTIFUNCTION DETECTOR (SOUNDER BASE)
 - EMERGENCY PULL CORD 150mm FROM WALL EXCEPT BATHROOM
 - DOOR BELL SOUNDER
 - DOOR BELL PUSH
 - ENERGY SAVING CEILING MOUNTED LIGHT ASD AC/WL100
 - CEILING ROSE WITH LOW ENERGY LIGHT CRABTREE 5255/S
 - CIRCULAR STANDARD CEILING LIGHT THORN NOVALINE 3x26W TC-DEL
 - CIRCULAR EMERGENCY CEILING LIGHT THORN NOVALINE 3x26W TC-DEL
 - BL LOW ENERGY EXTERNAL BULKHEAD - ASD CLARITY LANDSCAPE IP65 EYELID, COLOUR DEPENDS ON EXTERNAL WALL FINISH
 - WALL LIGHT AS FRANKLITE WB243EU/8SS
 - TWIN SWITCHED SOCKET (NEON INDICATOR)
 - SWITCHED SPUR C/W NEON INDICATOR
 - DB DENOTES DOORBELL
 - F DENOTES FAN UNIT
 - GB DENOTES GATEWAY BOX
 - TVA DENOTES TV AMPLIFIER
 - DH FIRE DOOR CLOSER CONNECTION POINT (these are wired from external fire alarm)
 - WALL MOUNTED REACH PLUS UNIT C/W PULL CORD & HUSH BUTTON
 - SH SHAVER POINT DUAL VOLTAGE
 - VENTILATION AIR VALVE
 - CONSUMER UNIT (low level) - 1200mm
 - GRID 3 GANG GRID SWITCH c/w FOLLOWING SWITCHES
* WASHING MACHINE/DRYER
* FRIDGE FREEZER
* DISHWASHER
- IP44 ○ ENERGY SAVING 18W TC-TEL LAMP, HF, RECESSED DOWNLIGHTER WITH WHITE BEZEL IP44, CLEAR GLASS ATTACHMENT, 125 Ø MM MAX, COMPLETE. FIRE RATED LUMINAIRES SHALL BE FITTED THROUGH FIRE RATED CEILINGS, AS AURORA LPF650+LPF683. ALL TOP FLOOR APARTMENT RECESSED LUMINAIRES SHALL BE ENCLOSED WITHIN AN INSULATION SUPPORT BOX TO ENSURE FREE AIR SURROUNDS THE LUMINAIRE.
- EM SELF CONTAINED SW NON MAINTAINED EMERGENCY BULKHEAD IP65
- MP MEDIA PLATE (CRABTREE 4318 WHITE OR CHROME) CONTAINING FOLLOWING:
2-TWIN 13A SOCKETS
1-BT OUTLET
1-PBX OUTLET
4-1 EACH SAT1, SAT2, TV, FM/DAB OUTLETS
1-SATELLITE RETURN
2-BLANKS
- * WHERE BTE AND PBX OUTLETS ARE INSTALLED TOGETHER, THEY SHALL BE MOUNTED AS A TWIN OUTLET PLATE FIXED ONTO A SINGLE SOCKET BOX.
- MAIN WATER BOND
- NOTE: FIRE ALARM TO BS5839.1.2013 L1 CLASSIFICATION

KEY TO DIMENSIONS



Copyright of this drawing is vested in the Architect and it must not be copied or reproduced without consent. Every effort has been made to ensure these details are correct but this does not constitute a legal document.

DO NOT SCALE OFF THIS DRAWING. IF IN DOUBT ASK.

THE INFORMATION IN THIS LEAFLET DOES NOT IN ANY WAY FORM PART OF A CONTRACT OR WARRANTY.

THE PARTICULARS ARE SENT OUT AS A GENERAL OUTLINE FOR GUIDANCE ONLY.

Scale. 1:50 @ A3 Date. 27-MAR-2015 Drawn. AD/

Client. The ExtraCare Charitable Trust
Marketing Drawings

Job title. ExtraCare Retirement Village
Earlsdon Park, Coventry

B6162-1119 Apartment 119

First Floor

Apartment Type C (Enhanced)

Unit 119 Area = 66.07m²

Apartment 119 Type C - 2 Bedroom

